

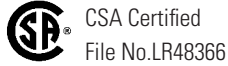
**ARN Series — Mono-Lever Switches**

**Mono-Lever Switches Ø 1-13/64" (30mm)  
Contact Blocks Rated for 600V, 10A**

**A4 Switches & Pilot Devices**

**Key features of the ARN Series include:**

- Available in 2-, 3-, and 4-positions.
- Maintained and spring-return modes available.
- Models available with interlock mechanism to prevent inadvertent actuation.



<b>Specifications</b>	<b>Operating Temperature</b>	-25° to 50°C (without freezing)	
	<b>Insulation Resistance</b>	100MΩ	
	<b>Contact Rating</b>	<b>Rated Voltage: Current</b>	110VDC: 3A 24V AC/DC: 10A 120VAC: 10A 240VAC: 6A 480VAC: 2A 600VAC: 1A
		<b>Insulation Voltage</b>	600V AC/DC
		<b>Rated Thermal Current</b>	10A
		<b>Electrical Life</b>	Over 500,000 operations

**Part Numbering Guide (Assembled)**

**Part Numbering Guide: Assembled Mono-Levers**

Example: Part Number ARN4-1012-10.00.02.11-B






- ① Type      ② No. of Contact Blocks      ③ Lever Action      ④ Contact Arrangement

	Description	Code	Remarks		
① Type	Standard Lever	ARN	Interlocking lever prevents inadvertent operation.		
	Short Lever	ARNS			
	Interlocking Lever	ARNL			
② No. of Contact Blocks	—	1 2 3 4	Each contact block contains two independent contacts.		
	③ Lever Action	Blocked		0	Specify in this order: Up.Right.Down.Left
		Maintained		1	
		Spring Return		2	
④ Contact Arrangement	No contacts	00	Specify the number of contacts to be activated in all active (non-blocked) positions: Up.Right.Down.Left		
	1 NO contact	10			
	1 NC contact	01			
	1 NO and 1 NC contact	11			
	2 NO contacts	20			

## Mono-Lever Switches (Sub-Assembled)



### Part Numbers: Standard Mono-Lever Operators

Operator Type	Lever Operation Mode	Part Number
 <b>Standard Lever</b>	2-Position manual return 3-Position manual return 4-Position manual return	ARN0-1010-B ARN0-1110-B ARN0-1111-B
	2-Position spring return 3-Position spring return 4-Position spring return	ARN0-2020-B ARN0-2220-B ARN0-2222-B
 <b>Short Lever</b>	2-Position manual return 3-Position manual return 4-Position manual return	ARNS0-1010-B ARNS0-1110-B ARNS0-1111-B
	2-Position spring return 3-Position spring return 4-Position spring return	ARNS0-2020-B ARNS0-2220-B ARNS0-2222-B
 <b>Interlocking Lever</b>	2-Position manual return 3-Position manual return 4-Position manual return	ARNL0-1010-B ARNL0-1110-B ARNL0-1111-B
	2-Position spring return 3-Position spring return 4-Position spring return	ARNL0-2020-B ARNL0-2220-B ARNL0-2222-B



### Part Numbers: Contact Blocks

Contact Arrangement	Part Number
2NO contacts	BR-1E
1NO & 1NC contact	BR-2E
2NC contacts	BR-3E
1NO early make contact	BR-1EM



To calculate the number of contact blocks required, add the number of NO and NC contacts on each pair of adjoining positions (up + right, right + down, down + left, and left + up). The largest of the four sums is the number of contact blocks required. Up to four contact blocks can be mounted.

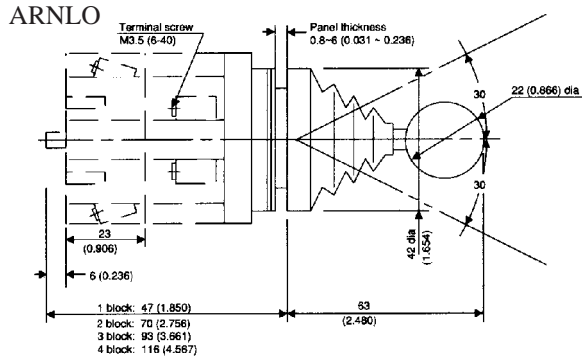
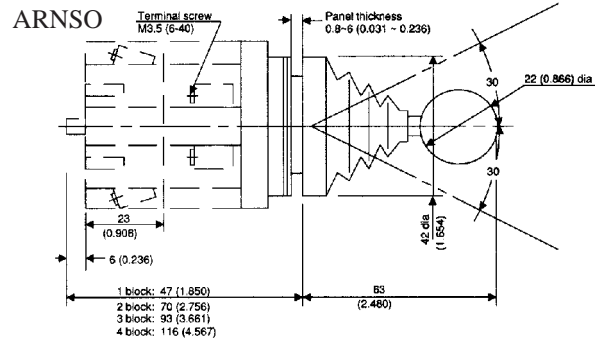
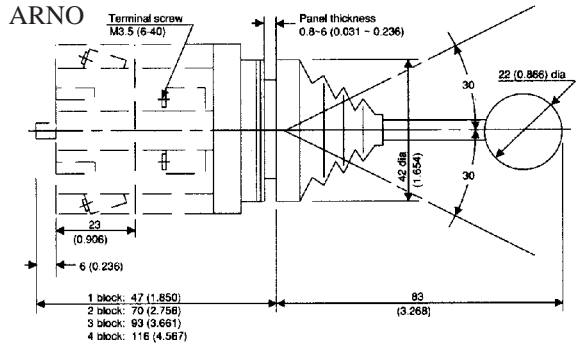
### Replacement Parts

Item	Part Number
 Bellows	ARN0, ARNS0 (standard & short lever) ARN-BL
	ARNL0 (Interlocking) ARNL-BL (comes in 2 pieces)
 Knob (ball)	All Models Knob (ball) ARNB-B

Dimensions — ARN Series

A4

Switches & Pilot Devices



Mounting Hole

ARNO  
ARNSO  
ARNLO

